

SEPHORA by O·P·I gelshine™

GEL GUIDE

Easy steps to long-lasting gel colour!



Scan. Watch. Learn.



Sephora by OPI GelShine™ Gel Colour

Product Line-Up

GelShine™ Base Coat	Nail Pads
GelShine™ Colour	Nail & Gel Colour Remover
GelShine™ Top Coat	Removal Wraps
GelShine™ LED Light	Removal Gloves
Nail Cleanser	Brush-On Cuticle Oil (use only after gel application)
Cuticle Pusher	
Nail Buffer	

Your Own:

Hand soap & sanitizer, natural nail file, hand lotion



Products

Sephora by OPI GelShine™ properly applied...

- Lasts up to 2 weeks!
- No dry time! 30-second LED technology 'cures' colour instantly
- No smudges, streaks or chips
- Intense shine that lasts
- Do-it-yourself removal in 20 minutes

P.S. GelShine™ is great for toes too!

Important Tips BEFORE you begin ...

- Watch how to do the GelShine™ mani and read all instructions.
- Finish steps 1 - 5 on one hand before starting other hand. Don't try to do all 10 nails at once, do one hand first, then the other.
- Shake all GelShine™ bottles vigorously 1 minute before use.
Note: gel is thicker than polish - shaking 'feels' different.
- **Ensure the right amount of gel on brush:** Spin brush stem around inside neck of bottle and wipe each side of brush against neck when removing from bottle.
- Keep nails flat and level during application and 'curing.'
- Brush on all gels in **thin** coats - thin coats look and perform best!
- Seal all nail edges with gel before 'curing.'
- Tip:** after sealing edges, lightly brush down over nail to remove any excess gel at edge.
- Remove excess gel from cuticles or surrounding skin before 'curing.'
- Remove gel residue from nails only after final 'curing' of Top Coat.

Never use cotton balls for any step; use only lint-free Nail Pads

Tips

HOW TO USE THE GelShine™ LED Light

Insert connector into port on GelShine™ LED Light and plug into outlet. Press button on top of light to activate. Light will turn off automatically after 30 seconds.



Place four fingers on platform at angle
(ensures all nails receive proper light exposure)



Place thumb in center of platform
(grasp platform underneath with other fingers)

If any heat sensation or discomfort occurs during use remove hand immediately. Unplug LED Light after use.

LED Light

Step One

PREP NAILS

Ensure long-lasting colour – don't skimp on these steps!

- Wash hands and use hand sanitizer.
- Shape nails to desired length.



- Gently push back cuticles with Cuticle Pusher.



- Gently remove shine from nails and close around cuticles with Nail Buffer.



- Completely saturate Nail Pad with Nail Cleanser.



- Thoroughly remove nail dust and oils.

- Be sure to also clean under nail edges and around cuticles.

Step 1

Step Two

Apply GelShine™ Base Coat



LED 'cure' 30 seconds after each coat. Apply on 4 fingers; 'cure.' Apply on thumb; 'cure.'



- Shake bottle vigorously.
- Brush on **thin** coat.
- Avoid cuticles.



- Seal nail edges with GelShine™ Base Coat. **Tip:** after sealing edges, lightly brush down over nail to remove any excess gel at edge.



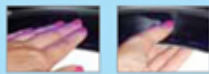
- Remove gel from around cuticles with Cuticle Pusher.
- LED 'cure' 30 seconds.

Do not wipe or touch nails. Avoid skin contact.

Step 2

Step Three

Apply GelShine™ Colour



LED 'cure' 30 seconds after each coat. Apply on 4 fingers; 'cure.' Apply on thumb; 'cure.'



- Shake bottle vigorously.
- Brush on **thin** coats. (Second coat will provide complete coverage)



- Seal nail edges with GelShine™ Colour. **Tip:** after sealing edges, lightly brush down over nail to remove any excess gel at edge.



- Remove gel from around cuticles with Cuticle Pusher.
- LED 'cure' 30 seconds.

Do not wipe or touch nails. Avoid skin contact.

Apply second coat of GelShine™ Colour & LED 'cure' 30 seconds (a third, thin coat can be applied after 'curing,' if desired).

Step 3

Step Four

Apply GelShine™ Top Coat



LED 'cure' 30 seconds after each coat. Apply on 4 fingers; 'cure.' Apply on thumb; 'cure.'



- Shake bottle vigorously.
- Brush on **thin** coat.



- Seal nail edges with GelShine™ Top Coat. **Tip:** after sealing edges, lightly brush down over nail to remove any excess gel at edge.



- Remove gel from around cuticles with Cuticle Pusher.
- LED 'cure' 30 seconds.

- Remove gel residue.

Thoroughly saturate Nail Pad with Nail Cleanser and wipe over and under nail edge.

REPEAT ALL APPLICATION STEPS ON OTHER HAND

Step 4

Step Five | Finish!

- Wash hands with soap and water.
- Apply Sephora by OPI Brush-on Cuticle Oil and massage into cuticles. Use regularly to keep cuticles soft & beautiful.



Finish!

GelShine™ Removal



Step 1

- Saturate Removal Pad with Nail & Gel Colour Remover.



Step 2

- Place pad over nail, wrap ends snugly around finger.



Step 3

- Pull wrap **over** tip of nail and press to seal end.



Step 4

- Cover hands with Removal Gloves.

- Check after 20 minutes. If gel is lifting around sides, gently push off with Cuticle Pusher. If not, repeat steps 1 and 2.



Step 5

Do not file nail surface, peel, pick, pull or use metal implements/electric drill to remove gel. Doing so can damage and/or weaken nails. If needed, lightly smooth nails with Nail Buffer.

Removal

How to care for GelShine™ Nails

Do not file nail surface, peel or pick off gel as damage to nail may occur. If gel separates from nail, follow proper removal instructions.

Wear cotton-lined rubber gloves while washing dishes or cleaning. Avoid excessive water exposure.

Use Sephora by OPI Brush-On Cuticle Oil regularly to keep cuticles soft and beautiful.



Nail Care

Additional Information

- Discontinue use if sensitization or discomfort occurs. Avoid skin contact due to sensitizing potential.
- Product is not recommended for use on thin, weak, damaged or infected nails.
- If irritation occurs, consult a physician. If swallowed, seek medical attention.
- KEEP OUT OF REACH OF CHILDREN.
- GelShine™ Base Coat and Nail Cleanser: FLAMMABLE. Keep away from heat and flame.
- For external use only.

GelShine™ Product Storage

- Always wipe neck of bottle with Nail Pad saturated with Nail Cleanser before recapping.
- Product is light sensitive. Store bottles in dark place or drawer.
- Keep and use at room temperature. Do not apply in direct sunlight.

For customer support, FAQ's, and video demonstration, visit www.sephora.com

Info