

HOW TO USE



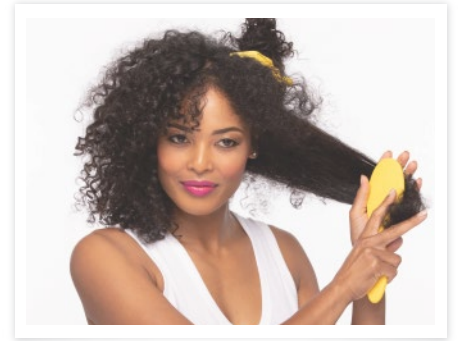
# THE BRUSH CRUSH

drybar®

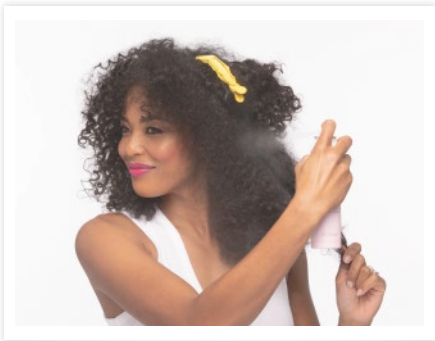


## THE BRUSH CRUSH HEATED STRAIGHTENING BRUSH

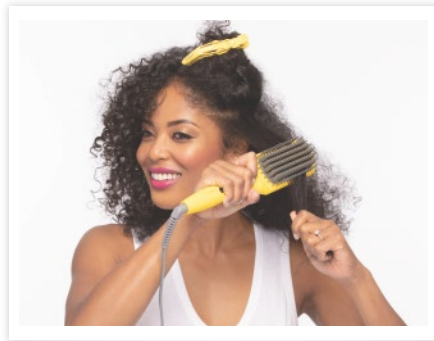
Combines the heat of a flat iron with the structure of a paddle brush to create a smooth, frizz-free look in one easy step.



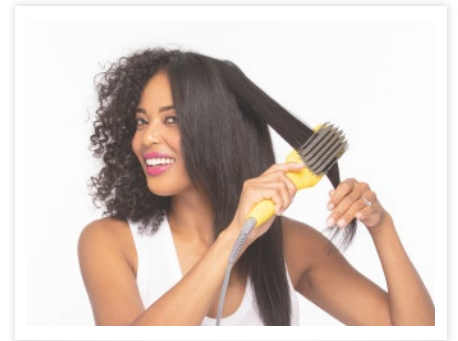
**STEP 1 :** Begin with dry, detangled hair.



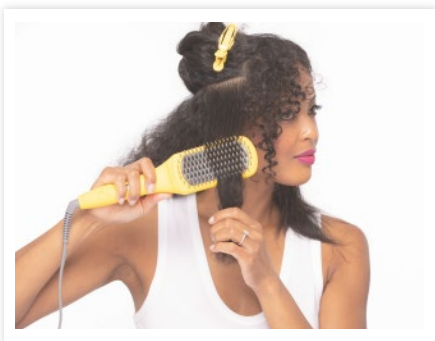
**STEP 2 :** Lift sections and spray Hot Toddy Heat Protectant Mist throughout (treat before you heat!).



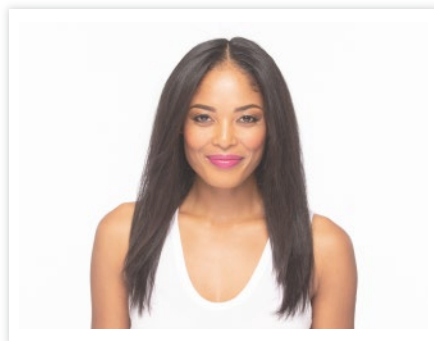
**STEP 3 :** Brush through small sections at a time from roots to ends.



**STEP 4 :** Hold the ends of each section as you brush for better control and added tension.



**STEP 5 :** Repeat until desired smoothness is achieved.



**STEP 6 :** Voilà! Smooth, sleek, frizz-free hair.

..... ALLI'S TIP .....



For added shape or bend, brush from beneath the section and angle the brush in the desired direction.

..... xx, Alli Webb .....