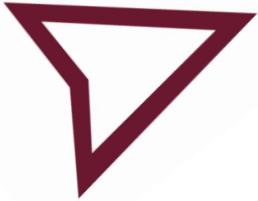


WANDER

BEAUTY

ACHIEVE NATURAL YET ENHANCED BROWS



FRAME YOUR
FACE MICRO
BROW PENCIL

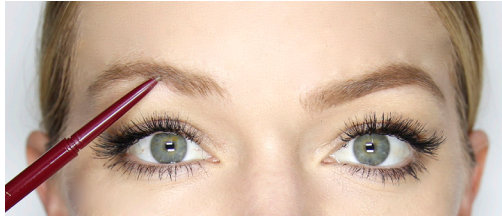


STEP 1



Brush up hair using spoolie to reveal sparse areas

STEP 2



Fill in any holes or sparse areas using delicate strokes for a natural effect

STEP 3



Pencil in working your way to your arch

STEP 4



Then extend down to the tip

STEP 5



Line up your pencil with the side of your nose to see where your brow should start

STEP 6



If it doesn't meet this line, you can fake it by drawing in a few hairs. This is the area you want to look the most natural.

STEP 7



Brush through using the spoolie for natural yet enhanced brows

