

BECCA

FOUNDATION FINDER



① SELECT YOUR SKIN TONE FAMILY

BECCA Stylist Tip: Use the model images and how your skin reacts to the sun to help determine your skin tone category.

② SELECT YOUR SHADE

BECCA Stylist Tip: Use the undertone descriptions to help determine your shade.



Jessica is wearing Porcelain

FAIR (Always burns, never tans)



PORCELAIN

Ivory beige, pink undertones



SHELL

Fair beige, neutral undertones



SAND

Pale beige, yellow/golden undertones



Chervil is wearing Buttercup

LIGHT (Usually burns, tans with difficulty)



CASHMERE

Natural beige, neutral undertones



BUFF

Light to medium beige, neutral to yellow/golden undertones



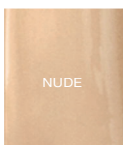
BUTTERCUP

Medium beige, yellow/golden undertones



Solveig is wearing Noisette

MEDIUM (Occasionally burns, gradually tans)



NUDE

Light to medium beige, neutral to yellow/golden undertones



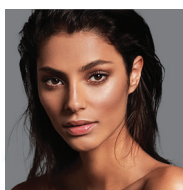
NOISETTE

Light tan beige, neutral undertones



OLIVE

Medium beige, yellow/golden undertones



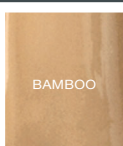
Shani is wearing Fawn

TAN (Rarely burns, tans with ease)



TAN

Medium to tan beige, neutral to pink undertones



BAMBOO

Dark tan beige, yellow/golden undertones



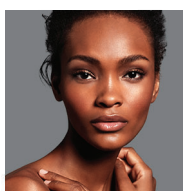
FAWN

Dark tan beige, warm/red undertones



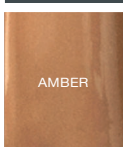
CAFÉ

Light tan beige, neutral to warm undertones



Nairobi is wearing Sienna

DARK GOLDEN (Very rarely burns, tans very easily)



AMBER

Deep tan, warm/red undertones



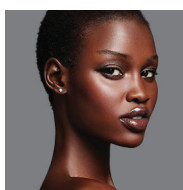
TOBACCO

Dark golden, neutral to warm undertones



SIENNA

Warm brown, neutral undertones



Neo is wearing Mahogany

DEEP BRONZE (Tans very easily)



MINK

Chocolate brown, neutral to cool undertones



SANDALWOOD

Golden chocolate, red undertones



MAHOGANY

Bronze chocolate, warm undertones



CACAO

Deep chocolate, neutral undertones

③ SELECT YOUR FORMULA



ULTIMATE COVERAGE COMPLEXION CRÈME

COVERAGE: Full

SKIN CONCERN: Uneven tone, Imperfections

FORMULA/FINISH: Crème/Natural



EVER-MATTE SHINE PROOF FOUNDATION

COVERAGE: Medium

SKIN CONCERN: Oiliness

FORMULA/FINISH: Liquid/Matte



PERFECT SKIN MINERAL POWDER FOUNDATION

COVERAGE: Light-Medium

SKIN CONCERN: Sensitive

FORMULA/FINISH: Pressed Powder/Natural