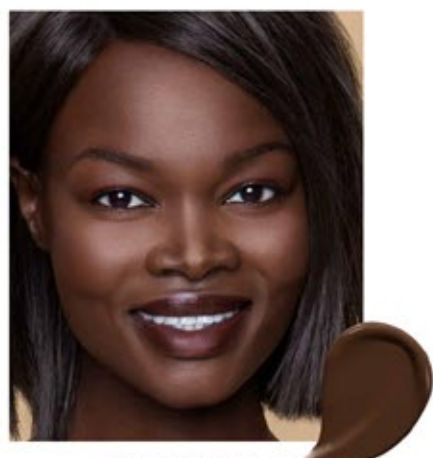


BECCA

Ultimate Coverage 24-Hour Foundation

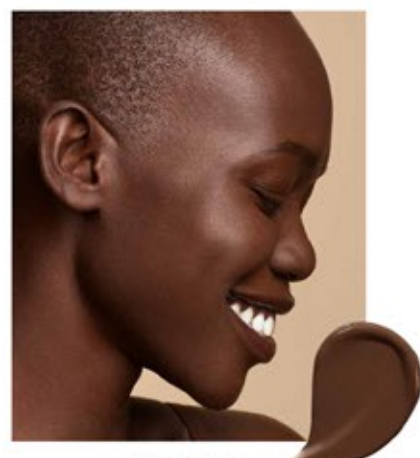
24 SHADES, 24 HOURS A DAY – WE'VE GOT YOU COVERED!
OIL-FREE, FULL-COVERAGE, WATER-RESISTANT WEAR.

#UltimateConfidence



CHESTNUT

Deepest brown with neutral undertones – for deepest skin



CACAO

Deep brown with red undertones – for deep skin



MAHOGANY

Warm brown with red undertones – for deep skin



ESPRESSO

(Previously Mink)
Cool brown with yellow undertones – for dark to deep skin



SIENNA

Rich brown with red undertones – for dark to deep skin



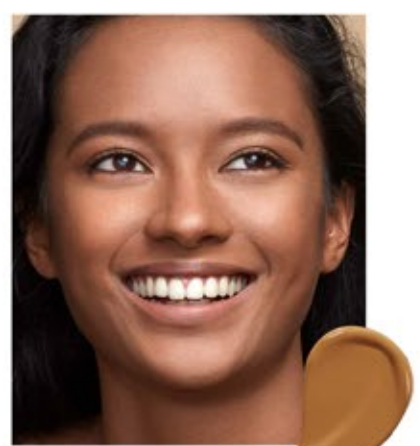
WALNUT

Warm medium brown with red undertones – for dark to deep skin



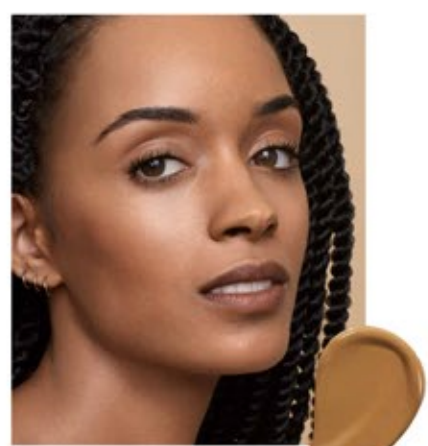
MAPLE

(Previously Tobacco)
Golden tan with yellow undertones – for dark skin



AMBER

Golden tan with warm/red undertones – for dark skin



CAFÉ

Cool tan with neutral undertones – for dark skin



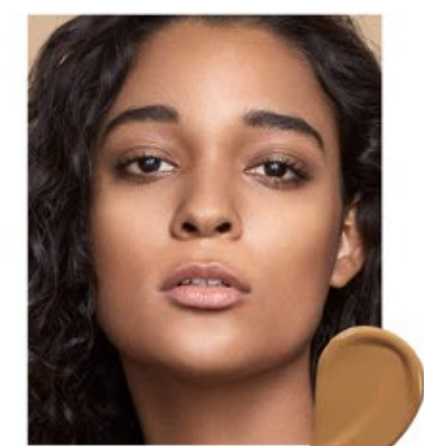
FAWN

Warm tan with red undertones – for medium to dark skin



BAMBOO

Golden beige with yellow undertones – for medium to dark skin



TAN

Cool medium beige with neutral to pink undertones – for medium to dark skin



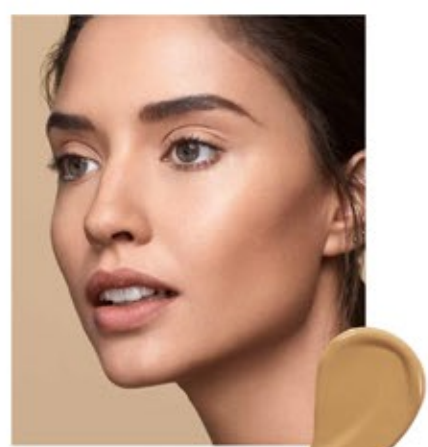
OLIVE

Warm medium beige with golden/olive undertones – for medium skin



NOISETTE

Warm medium beige with pink undertones – for medium skin



DRIFTWOOD

(Previously Nude)
Cool medium beige with neutral undertones – for medium skin



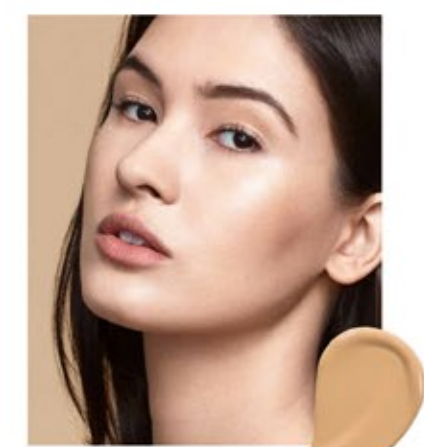
BUTTERCUP

Medium beige with golden undertones – for light to medium skin



BUFF

Golden beige with yellow/golden undertones – for light to medium skin



CASHMERE

Cool beige with golden undertones – for light skin



VANILLA

Light beige with neutral undertones – for light skin



SAND

Light Beige with yellow/golden undertones – for light skin



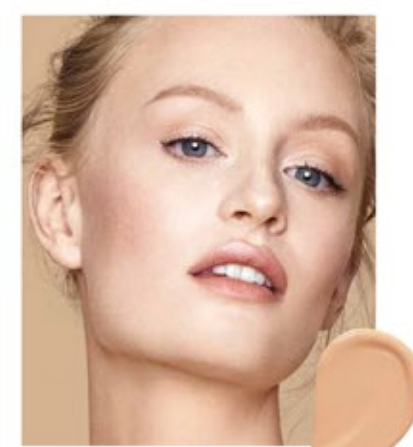
SHELL

Light Beige with neutral undertones – For fair to light skin



PORCELAIN

Light beige with pink undertones – for fair to light skin



IVORY

Lightest beige with pink undertones – for fairest skin



LINEN

Lightest beige with neutral undertones – for fairest skin