



MAKE UP FOR EVER

PROFESSIONAL - PARIS

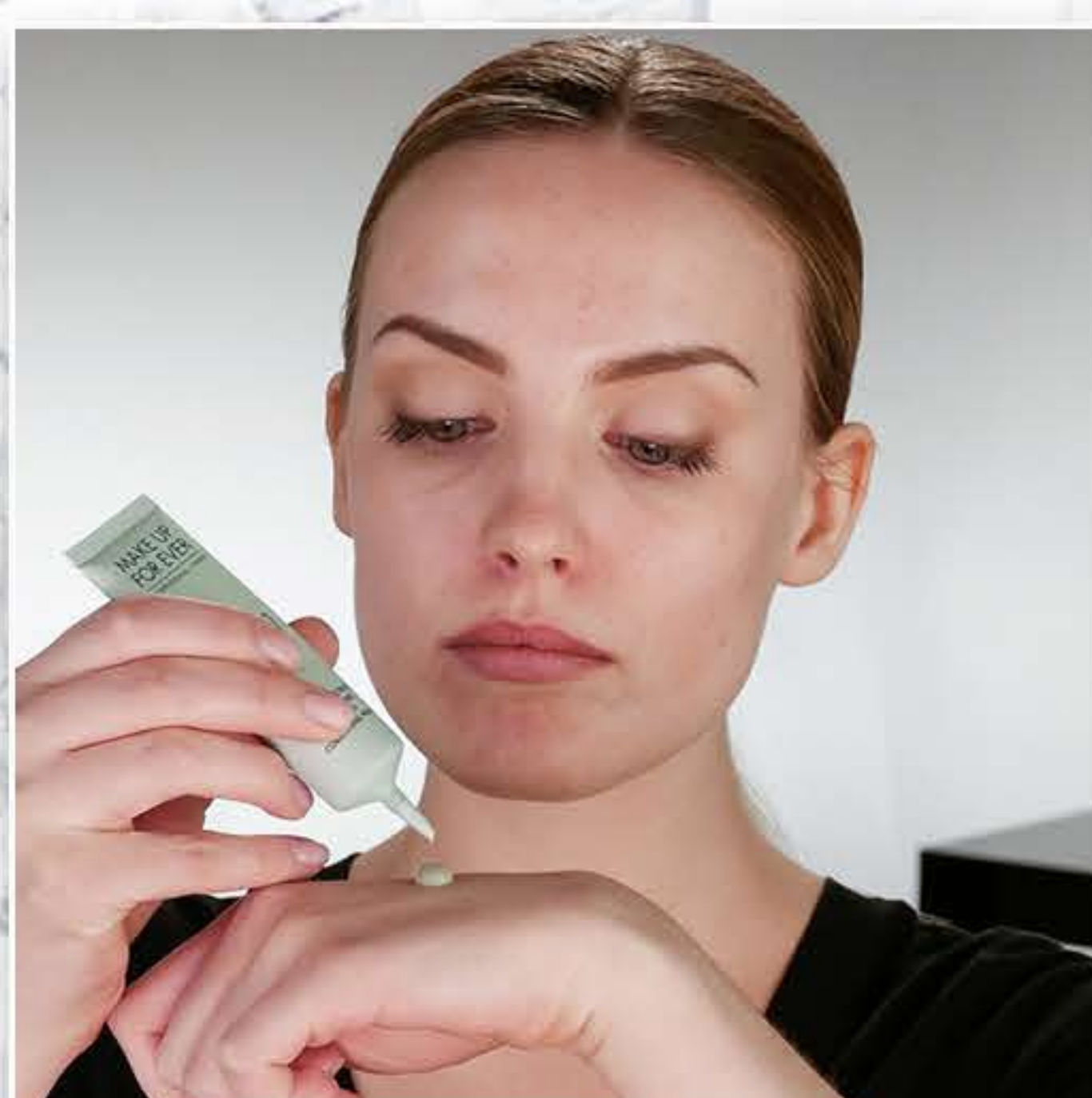
ERASE COLOR WITH COLORS HOW TO NEUTRALIZE REDNESS



BEFORE

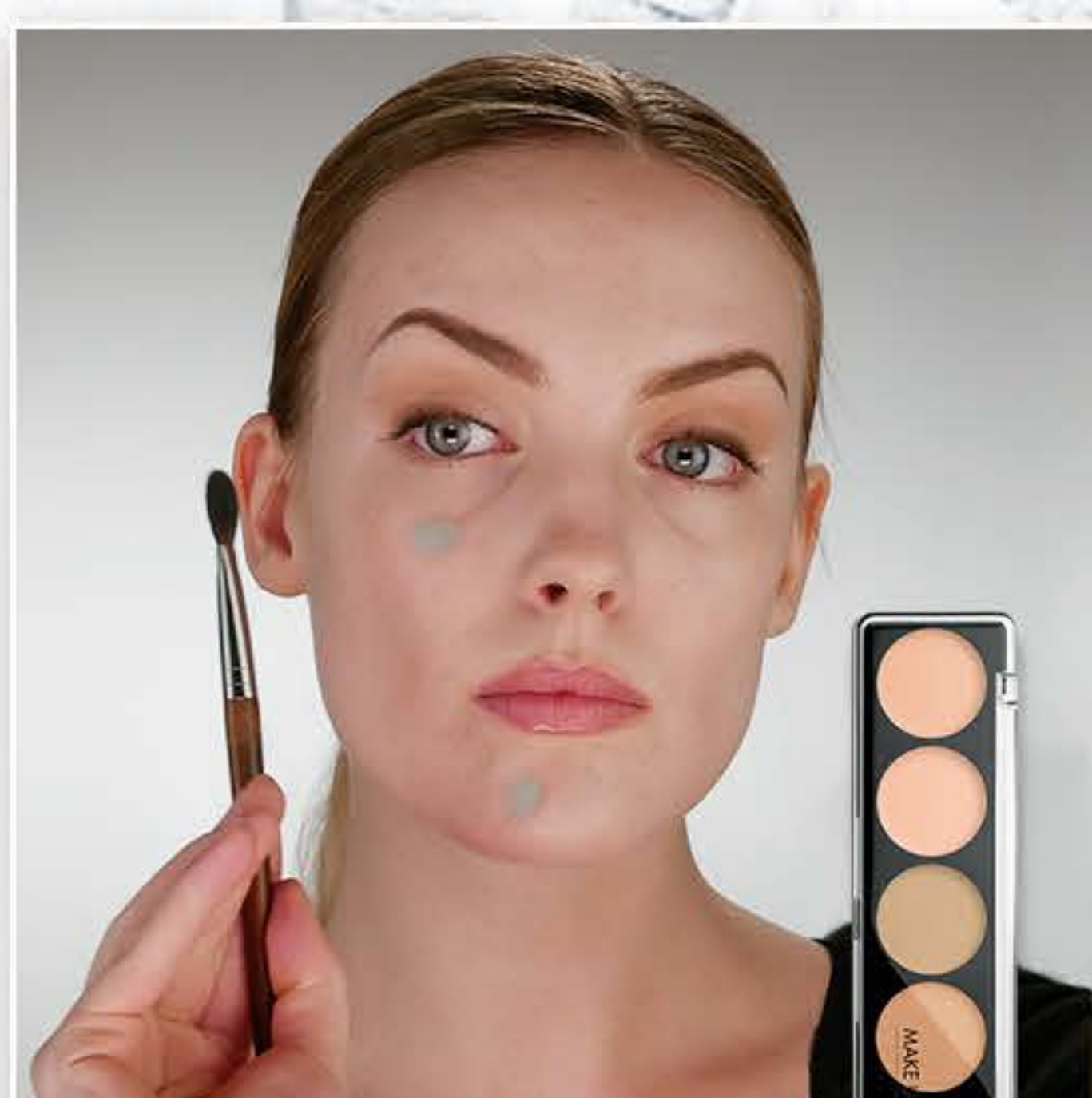


AFTER



STEP 1

Prep the skin by using Step1 Skin Equalizer Redness Correcting Primer. Apply in the center of the face for all-over color correction.



STEP 2

Spot correct with the green shade from Camouflage Cream Palette 1 for any additional redness. Use a tapping and pressing motion to build coverage.



STEP 3

Then, use the neutral shades from the Camouflage Cream Palette 1 to build coverage and hide imperfections. Mix the lighter and darker shades to customize.



STEP 4

For the ultimate complexion perfection, finish with Ultra HD Foundation. Tap and stretch with Artisan Brush 108 for best results.

PRO TIP

For **mild redness**, use STEP1 Skin EQUALIZER in Yellow.



STEP1 Skin EQUALIZER
Redness Correcting Primer



Camouflage Cream
Palette 1



Ultra HD Foundation Y225

AVAILABLE AT SEPHORA