

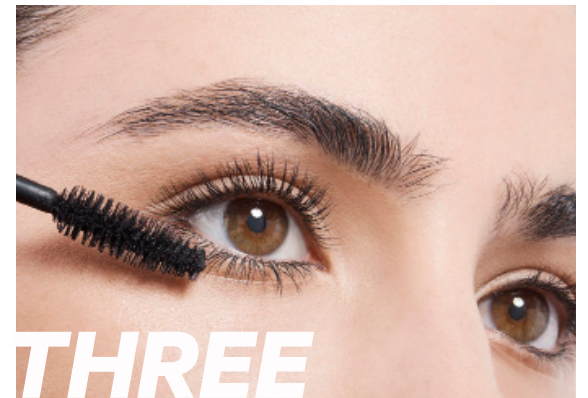
HOW TO APPLY



START ON YOUR TOP LASHES. WIGGLE THE PUFF PUFF BRUSH FROM ROOT TO TIP TO COAT. JIGGLE AT THE LASH LINE FOR ADDED THICKNESS.



MOVE TOWARDS YOUR OUTER LASHES AND USE THE TAPERED BRUSH HEAD TO SEPARATE AND DEFINE. REPEAT FOR INNER CORNERS.



LOOK UP AND USE THE TAPERED BRUSH HEAD TO SEPARATE AND COAT BOTTOM LASHES FROM ROOT TO TIP.