

EVERYTHING YOU NEED TO KNOW ABOUT

# MELT INTO MOISTURE™

*Matcha Butter Conditioning Mask*



## WHO IS IT FOR? WAVY, CURLY & SUPER CURLY

If your natural hair texture is prone to extreme dryness, or her curls are parched from moisture-zapping weather, this luxuriously creamy mask is just what the curl doctor ordered!

## WHAT DOES IT DO?

This nourishing treatment mask is like a magical elixir for dehydrated curls. The buttery texture melts into every strand without weighing hair down. Curls are left silky-soft, shiny and completely transformed.

## WHAT'S IN IT THAT MAKES IT SO SPECIAL?

*Matcha Green Tea Butter*

Retains moisture and seals cuticle

*Beet Root Extract*

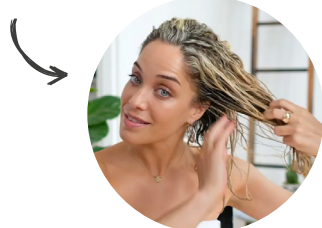
Improves elasticity and protects color

*Sweet Almond Oil*

Rich in vitamins and Omega Fatty Acids to help moisturize and nourish the hair

## HOW DO I USE IT?

- 1 For a quick moisture boost, apply after cleansing in sections and let it sit for 3 minutes.



- 2 Need more intense hydration? Cover hair with a plastic cap for 15-20 minutes, with or without heat. Use a heat cap or hooded dryer. Slip on a plastic cap, then the DevaTowel, generating body heat. Or use the steam from the shower.



- 3 Rinse thoroughly and finish with your regular stylers.

Use once per week or as needed.

## MORE WAYS TO USE MELT INTO MOISTURE

### MAXIMUM MOISTURE

Leave in over night.  
Use a plastic cap or DevaTowel.

### PRE-POO

If you're having trouble with detangling curls, apply to dry hair in sections before cleansing

## WHEN A WAVY, CURLY OR SUPER CURLY IS IN NEED OF MOISTURE

### WAVY



- Tends to wear hair long, which is prone to tangles, especially if she has gone too long without a haircut.
- Use Melt Into Moisture to easily detangle and make waves feel soft and hydrated.

### CURLY



- Curly hair is always craving moisture. Climate can add to dehydration making curls feel extra dry and brittle.
- Melt Into Moisture literally melts into hair leaving curls extra soft and manageable.

### SUPER CURLY



- She's looking for remedies to help with dryness and tangles.
- Use Melt Into Moisture for a blast of moisture by applying on wet curls in sections after cleansing for soft, manageable curls.