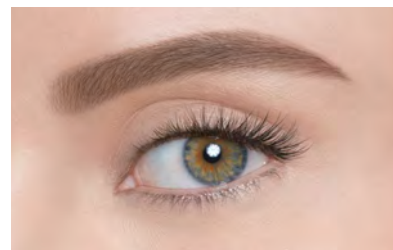


VELOUR

The Effortless Kit

Velour's Effortless Kit contains everything you need to apply your first pair of false eyelashes. No measuring, no trimming, no eyeliner, no drama. Just glue and go.



WOULD I LIE?

Yes it's that easy! Just glue and go - no measure, no trim, no drama. Flared and criss-crossed, these ultra natural lashes are so easy to apply, its perfect for first-time lash users.

INTRODUCING THE EFFORTLESS COLLECTION BY VELOUR.
OUR MOST EASY GOING LASHES EVER.

VOICI LA COLLECTION SANS EFFORT DE VELOUR. NOS CILS LES PLUS FACILES À PORTER À SES POUX.



- NO MEASURING AUCUNE MESURE
- NO TRIMMING AUCUNE TAILLE
- NO EYELINER AUCUN LIÈNEUR
- NO DRAMA AUCUN DRÔME

NOW IT'S EFFORTLESS TO ACHIEVE FLAWLESS NATURAL LASHES.
IL EST MAINTENANT PLUS FACILE QUE JAMAIS D'OBTENIR DES CILS IMPÉCCABLES D'ASPECT NATUREL.

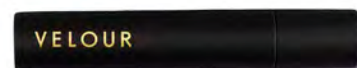
WOULD I LIE?
1 PAIR OF SILK LASHES 1 PAIRE CILS DE SOIE

PLUS IT
1 MINI LASH APPLICATOR 1 MINI APPLICATEUR
1 WHITE LATEX FREE MINI LASH ADHESIVE 1 MINUTURE DE COLLE SANS LATEX BLANC



MINI LASH APPLICATOR

A mini lash applicator to make applying and perfecting your lashes a breeze.



DELUXE SIZE WHITE, LATEX-FREE LASH ADHESIVE (0.15oz | 4.5mL)

Velour's white, latex-free lash adhesive dries invisible and lasts all day. Easy removal from the band.



NOW IT'S
EFFORTLESS
TO *achieve*
FLAWLESS,
NATURAL
LASHES.

Perfect for first-time lash users or lash lovers who just want to glue and go.

VELOUR

Applying Velour False Lashes

Velour's Effortless Collection can be worn with or without mascara applied to your natural lashes. If wearing mascara, apply to natural lashes first and allow to dry.



1. Gently lift the outer corner of the lash band to remove the lash from the tray. To avoid any damage to the lash, **do not pull directly on the hairs.**



2. **No need to measure or trim!** Directly apply an even coating of Velour Lash Adhesive across the band. Allow 20-30 seconds for the adhesive to become tacky.



3. Using the tweezer side of the **Too Easy Lash Applicator**, apply lash to the outer $\frac{3}{4}$ of the eye. Blend natural and Effortless lashes together using the comb side of the applicator.

REMOVING VELOUR FALSE LASHES

—

1.

Gently grasp the outer corner of the Velour false eyelash band and lift from the outer eye corner to inner eye corner.

2.

Place the lash back in its original position in the lash tray. To maintain the longevity of your Velour lashes, we recommend keeping them stored in a closed Velour lash case.

Velour recommends gently peeling away lash adhesive build-up on the lash band after 3-5 uses.

