

VELOUR

The Effortless Collection

Our most easy going false lashes ever.



MEASURING



TRIMMING

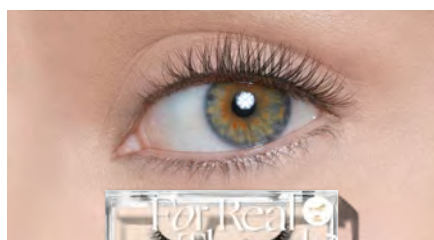


EYELINER



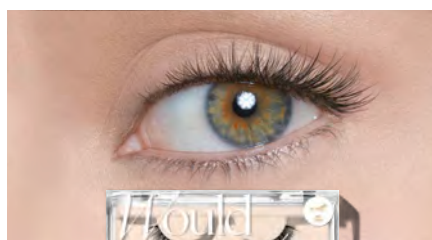
DRAMA

Just Glue and Go!



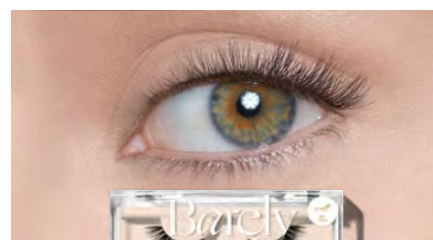
FOR REAL THOUGH?

This lash is round, criss-crossed and wispie, giving you a flawless, no drama lash look.



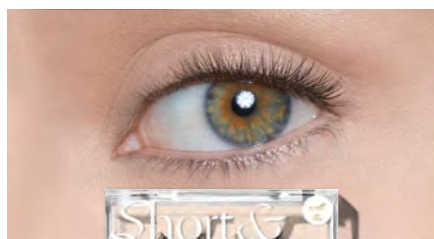
WOULD I LIE?

Flared and criss-crossed, these ultra-natural lashes are so easy to apply. Perfect for first-time lash users.



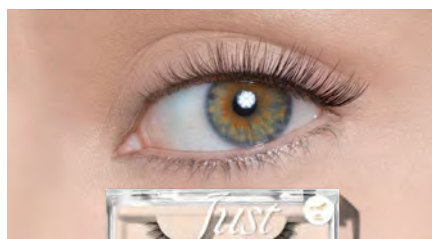
BARELY THERE

Faster to apply than mascara, this lash gives you the perfect flared and wispy look.



SHORT & SWEET

Achieve a natural volume with added flare and curl - no measuring needed.



JUST A HINT

Add an extra lift to your eyes with this naturally flared lash.

—
NOW IT'S
EFFORTLESS
TO *achieve*
FLAWLESS,
NATURAL
LASHES.
—

VELOUR

Applying Velour False Lashes

Velour's Effortless Collection can be worn with or without mascara applied to your natural lashes. If wearing mascara, apply to natural lashes first and allow to dry.



1. Gently lift the outer corner of the lash band to remove the lash from the tray. To avoid any damage to the lash, **do not pull directly on the hairs.**



2. **No need to measure or trim!** Directly apply an even coating of Velour Lash Adhesive across the band. Allow 20-30 seconds for the adhesive to become tacky.



3. Using the tweezer side of the **Too Easy Lash Applicator**, apply lash to the outer $\frac{3}{4}$ of the eye. Blend natural and Effortless lashes together using the comb side of the applicator.

REMOVING VELOUR FALSE LASHES

—

1.

Gently grasp the outer corner of the Velour false eyelash band and lift from the outer eye corner to inner eye corner.

2.

Place the lash back in its original position in the lash tray. To maintain the longevity of your Velour lashes, we recommend keeping them stored in a closed Velour lash case.

Velour recommends gently peeling away lash adhesive build-up on the lash band after 3-5 uses.

