

smashbox

FIND YOUR PERFECT STUDIO SKIN FOUNDATION SHADE

1. CHOOSE YOUR SHADE RANGE

Find the shade that's right for you now. Skin tone can change based on the season.

FAIR
LIGHT
MEDIUM
DARK
DEEP

2. DISCOVER YOUR UNDERTONE

Undertones never change—they're based on your skin's underlying hue.



WARM

- Tones: hints of yellow or gold
- Veins: green or olive
- Tans easily



NEUTRAL

- Tones: a mix of warm & cool tones, or hard to tell
- Veins: mix of blue & green
- Burns, then tans

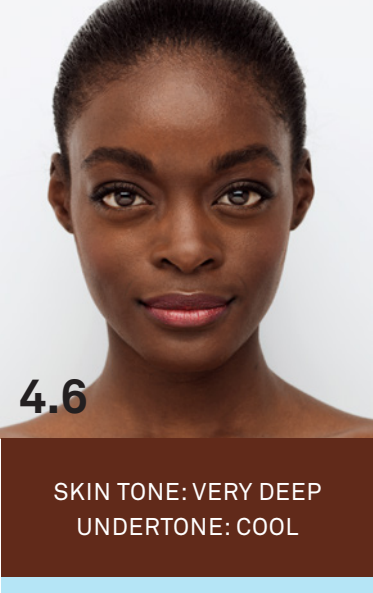
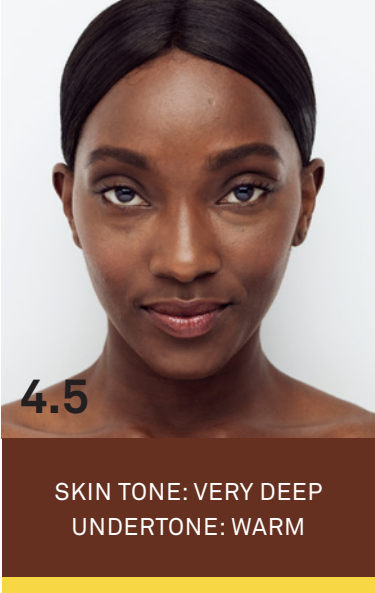
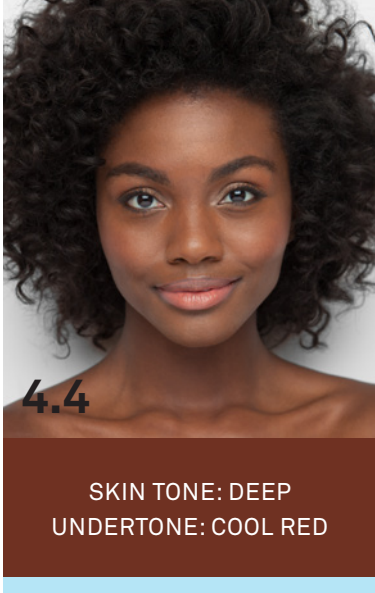
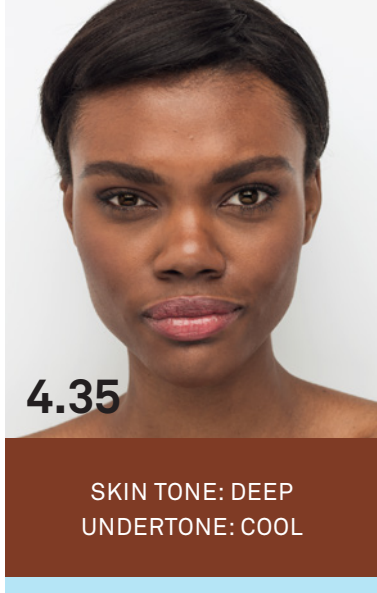
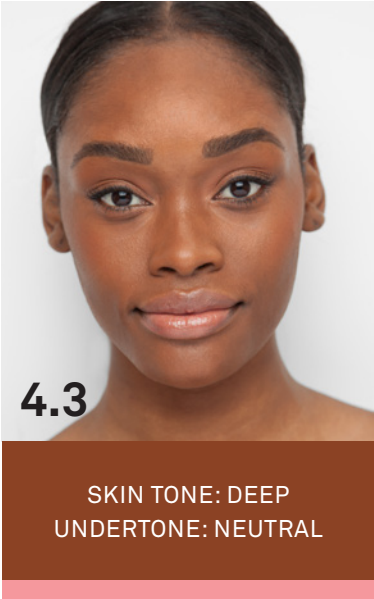
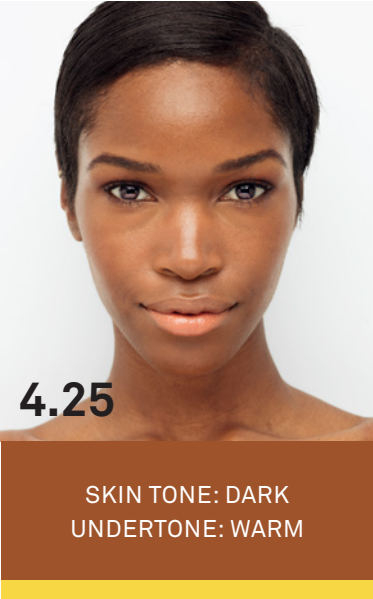
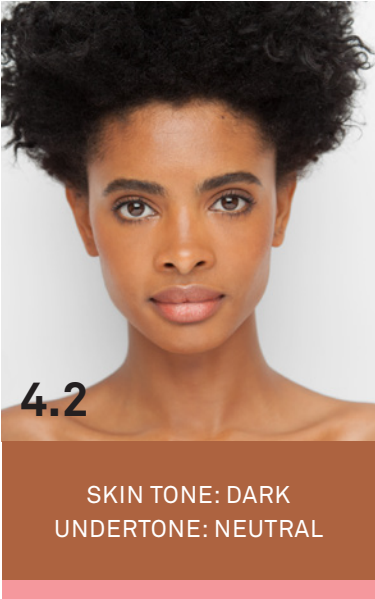
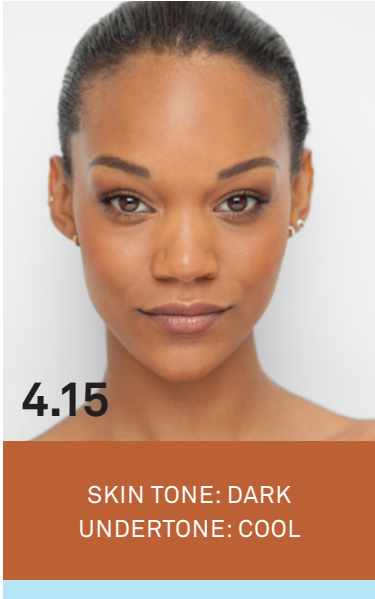
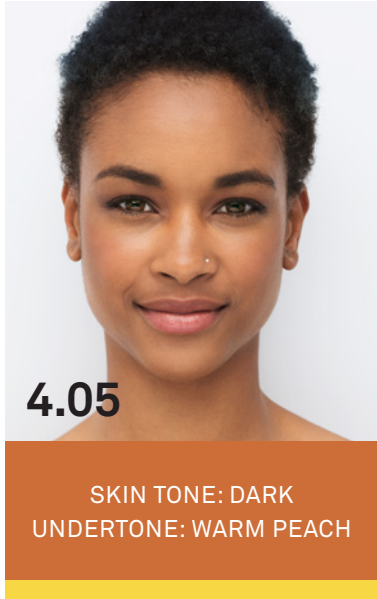
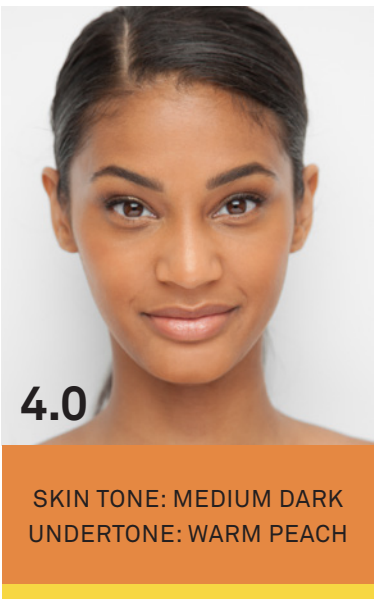
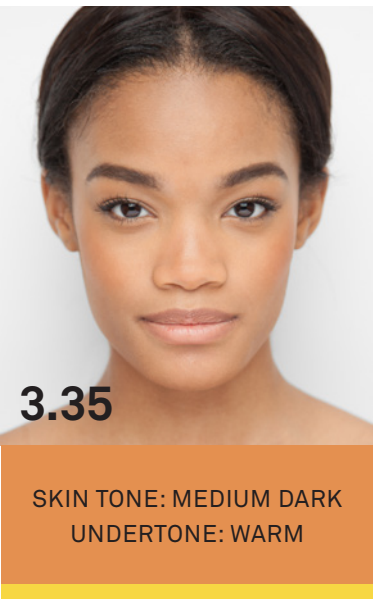
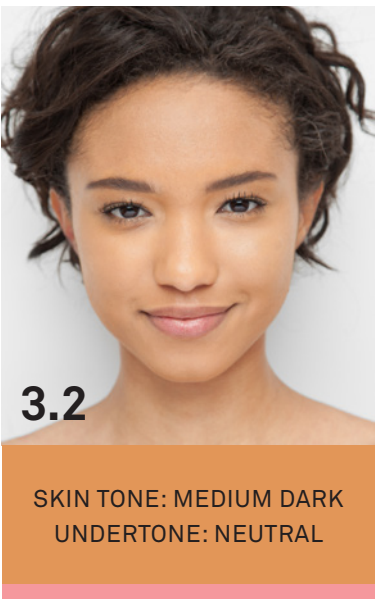
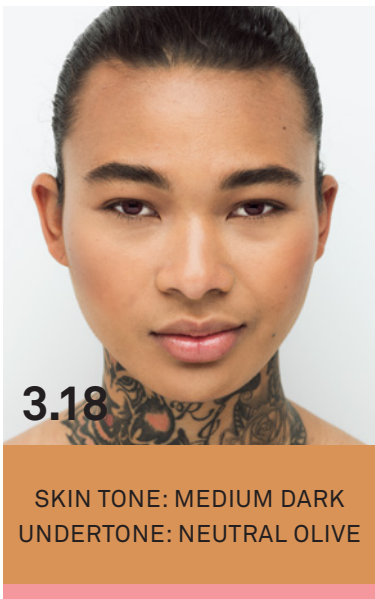
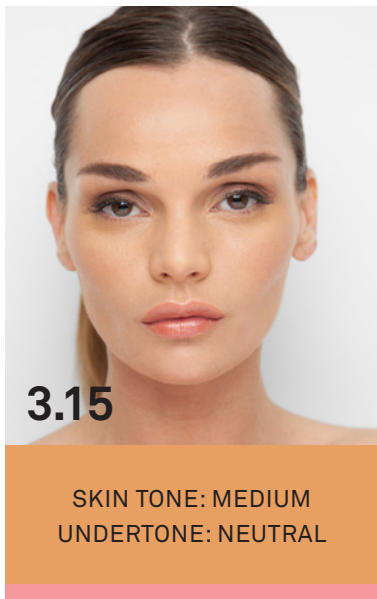
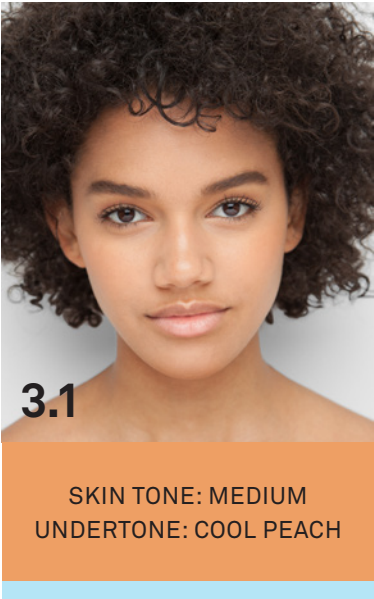
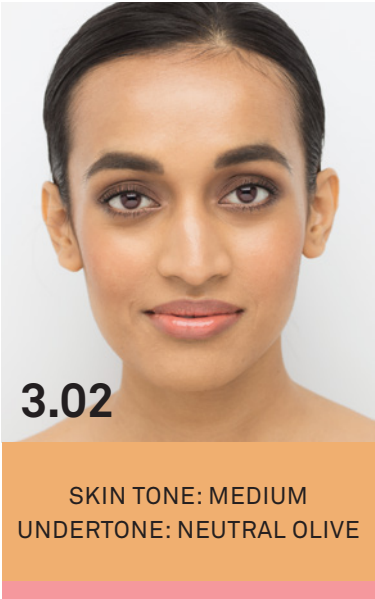
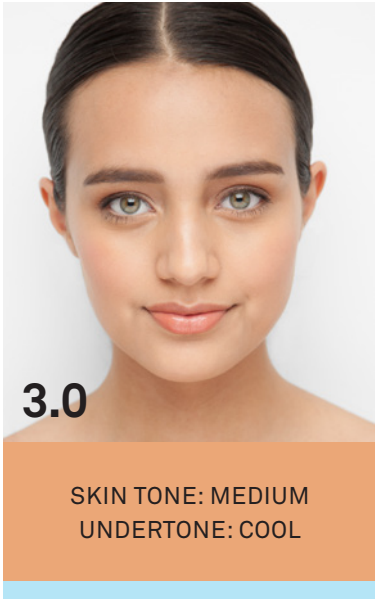
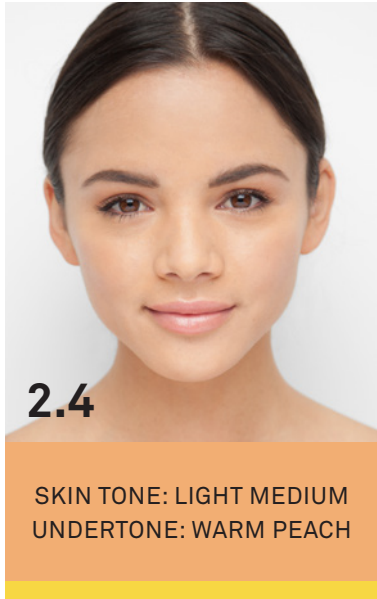
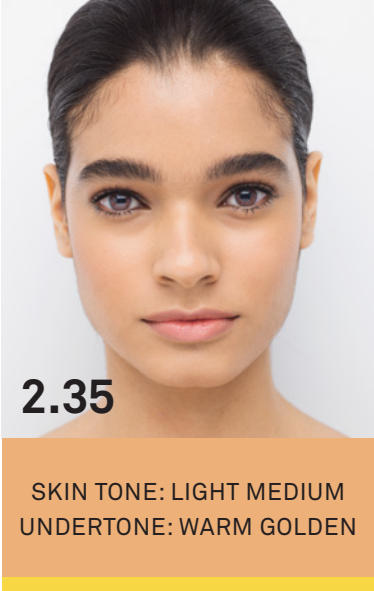
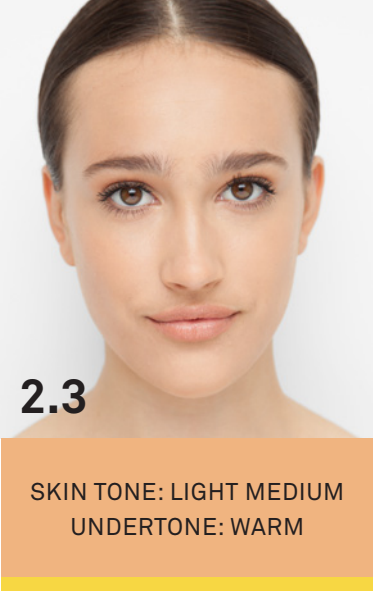
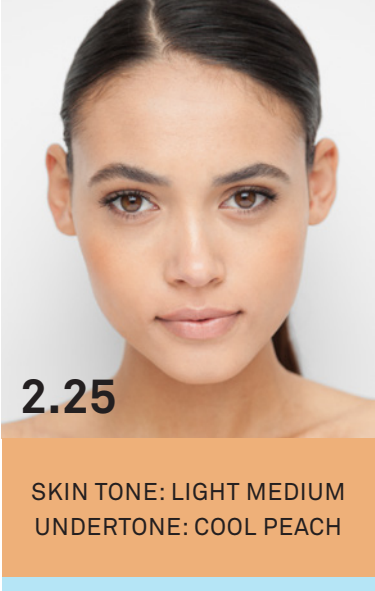
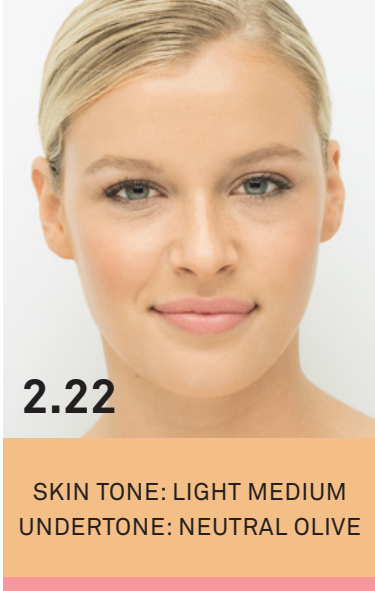
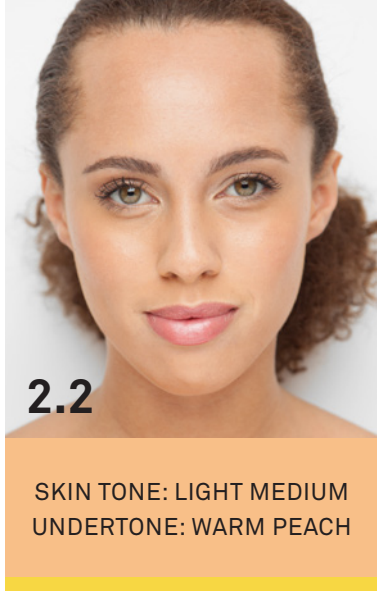
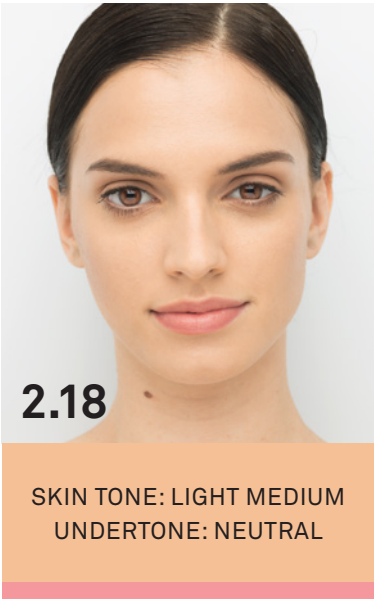
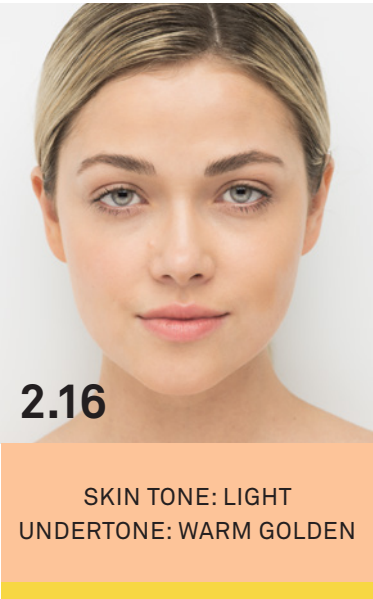
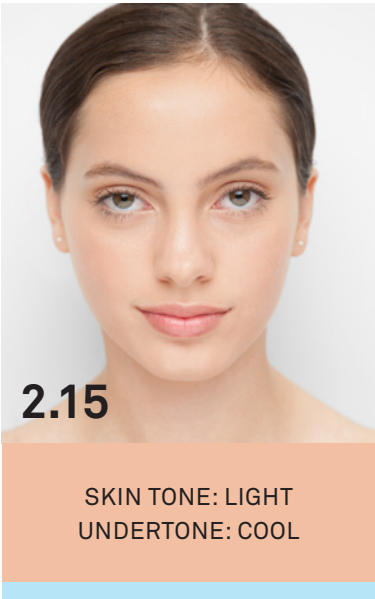
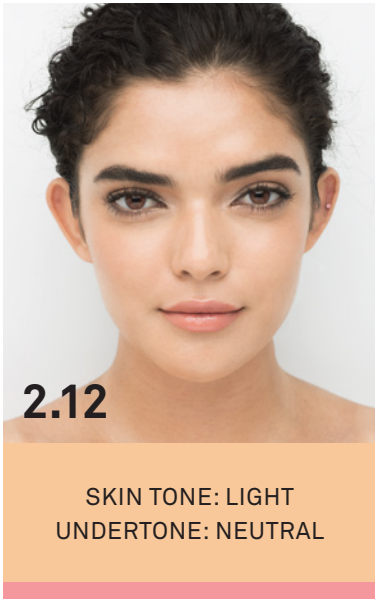
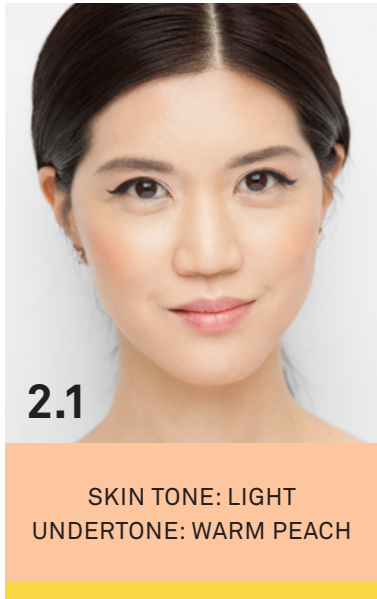
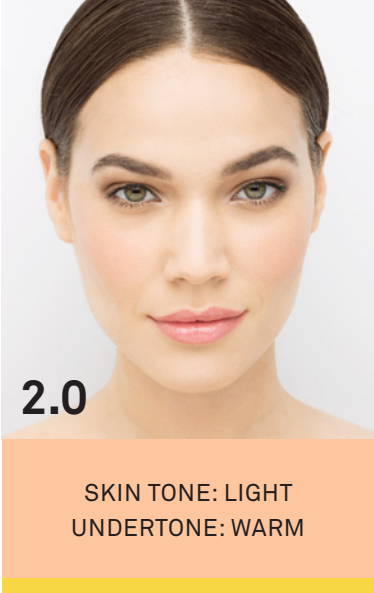
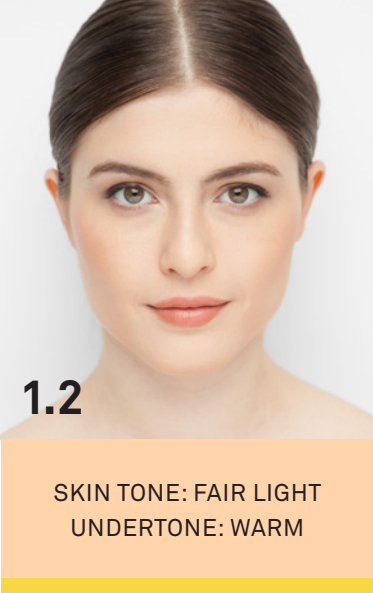
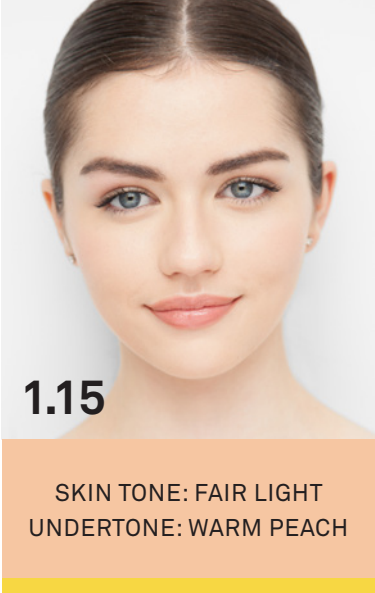
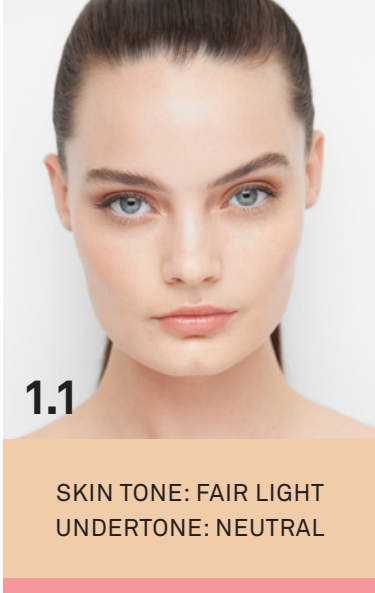
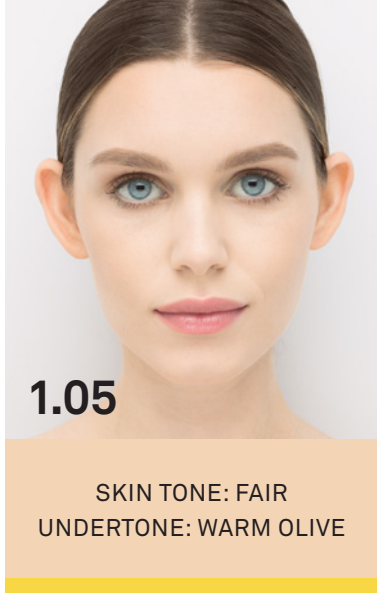
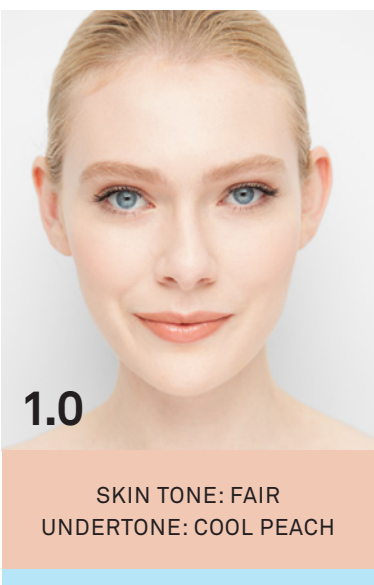
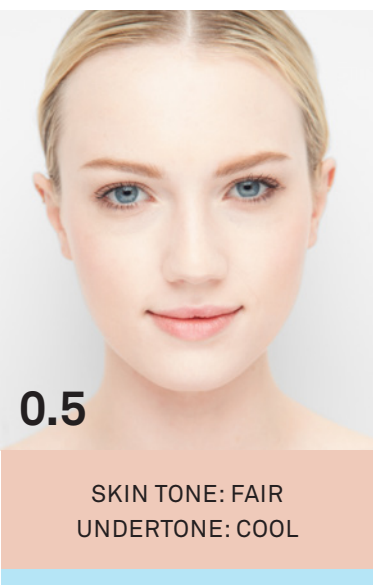
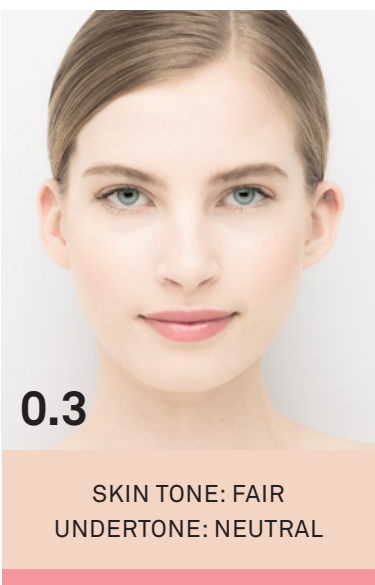
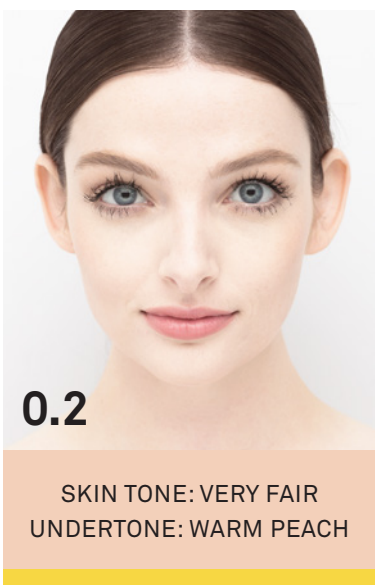
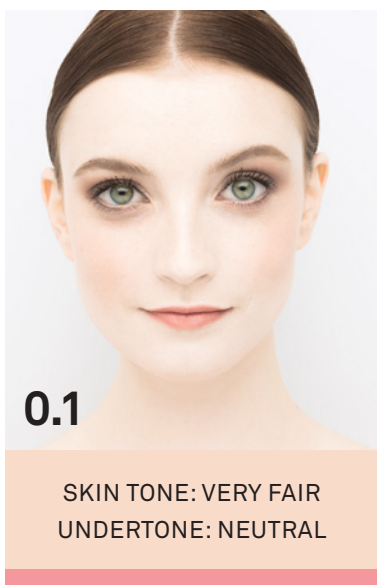


COOL

- Tones: hints of pink or blue
- Veins: blue or purple
- Burns easily

3. FIND YOUR MATCH

Now that you know your shade range & undertone, look for the model whose skin looks most like yours.



STUDIO TIP

Always start with Photo Finish Primer for smoother application & longer wear.